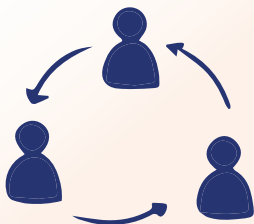


université  
PARIS-SACLAY

INSTITUTE  
**DATAIA**  
Data Science, Intelligence & Society



**PAI**

Programme d’Affiliation Industrielle

a club of excellence to boost the  
collective strength of DATAIA’s academic  
ecosystem and industrial members

---

université  
PARIS-SACLAY



université  
PARIS-SACLAY

UVSQ  
université PARIS-SACLAY



CentraleSupélec

école  
normale  
supérieure  
paris-saclay

AgroParisTech



INRAE

Inria



ONERA  
THE FRENCH AEROSPACE LAB

FM  
JH  
FONDATION MATHÉMATIQUE  
JACQUES HACCAIARD



CentraleSupélec

EXE

GUSTAVE  
ROUSSY  
CANCER CAMPUS  
GRAND PARIS

Institut Mines-Télécom  
Business School

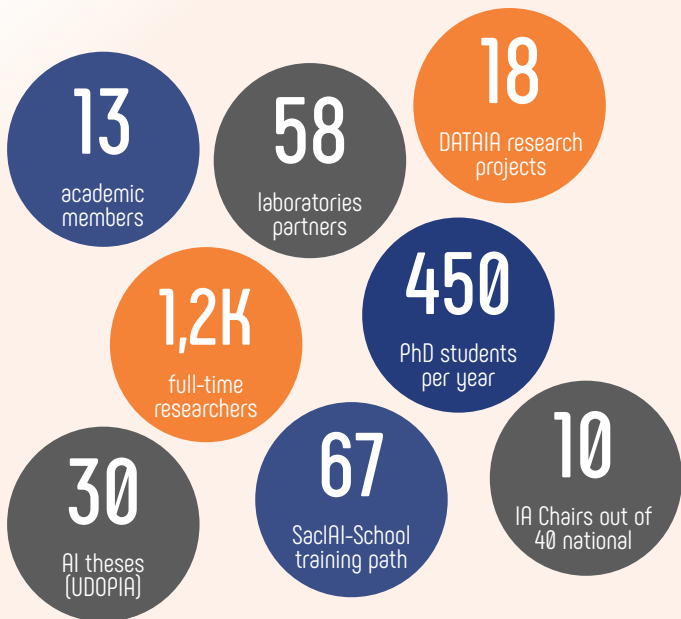
INSTITUT  
d'OPTIQUE  
GRADUATE SCHOOL  
ParisTech

IHES  
Institut des Hautes Études Scientifiques

# DATAIA PARIS-SACLAY INSTITUTE

Located within Paris-Saclay University, south of Paris area (16th in the Shanghai ranking, 1st in mathematics), it is the **first French ecosystem in data sciences, AI and their societal impacts.**

Its mission is to **bring together multidisciplinary skills** and to **boost the power of the academic and industrial partners** of the Paris-Saclay ecosystem.



# MISSIONS



## 4 overarching challenges

- From Machine Learning to advanced AI
- From unstructured Data to Decision Support Data
- Transparency, Responsibility & Ethics
- Data Protection, Regulation & Economy

# INDUSTRIAL AFFILIATE PROGRAM

The Industrial Affiliation Program (PAI) offers privileged access to researchers and students of the Paris-Saclay University cluster of excellence:

- **Integrating the powerful AI ecosystem**  
of UPSaclay Campus
- **Co-building dedicated/specific training/tutorial programs**  
for faster skills development
- **Sharing promotions and job offers**  
within the wide UPSaclay student community
- **Contributing to worldwide seminars and working sessions**
- **Participating in the definition of the scientific/technical strategy**  
of the Institute and its roadmap refinement
- **Preparing and building up joint chairs, labs and multilateral R&D projects**
- **Easy-accessing to various training offers/opportunities**  
in UPSaclay ecosystem
- **Exchanging with multi-disciplinary academic experts**  
matching respective interests
- **Supporting access to computing resources/advanced softwares**  
dedicated to AI
- **Allowing major research breakthrough**

# DATAIA CLUB CONNECTION (D2C)

---



The DATAIA Club Connection (D2C) **offers targeted and qualified meetings** between high-level academic and industrial experts to pave the way for ambitious collaborations: expertise, internships, theses, joint teams, multi-partner chairs.

The typical D2C program is organized around **pitches** (3' - Presentation of the respective prospective topics), **mini round tables** (30' - sharing of experiences around common needs) and **match dating** (15' - specific needs to address).

8

D2C  
organized

12

DATAIA members  
participants

32

DATAIA laboratories  
participants

34

companies  
participants

142

match datings  
organized

18

projects  
under study

# CONTACT

---



**Eric TORDJEMAN**

Head of industrial partnerships

[eric.tordjeman@universite-paris-saclay.fr](mailto:eric.tordjeman@universite-paris-saclay.fr)



[eric-tordjeman](https://www.linkedin.com/in/eric-tordjeman)

To learn more about DATAIA's Institute  
Industrial Affiliation Program :



université  
PARIS-SACLAY

INSTITUT  
**DATAIA**  
Science des données, Intelligence & Société

**DATAIA Paris-Saclay Institute**

Université Paris-Saclay - Campus CentraleSupélec  
3 rue Joliot Curie  
91190 Gif-sur-Yvette

**Communication Department**

com-dataia@inria.fr

 [www.dataia.eu](http://www.dataia.eu)

 [@institut\\_dataia](https://twitter.com/institut_dataia)

 [@institut-dataia](https://www.linkedin.com/company/institut-dataia)